

Cleco®



Durable Production Performance

CurrentControl For Quality Critical Joints

COOPER PowerTools

Durability. Speed

Cost Effective Solution for Quality Critical Applications.

Cleco **CurrentControl** electric assembly tools provide an up-sell solution to quality critical applications presently specifying a pneumatic clutch tool and verifier combination. Cleco proprietary **CurrentControl** systems up-sell on superior productivity, error proofing and process flexibility.

Our Cleco controller systems are recognized globally for “best in class” software interface. This is accomplished through simple navigation, basic programming screens, visual programming graphics and real-time process feedback. Our latest innovation “Auto Program” takes the guesswork out of programming. Simply enter the application torque target and the software automatically compiles the program for production use.



Unrestricted Speed Control



Adjustable angle head allows flexible orientation



New Cleco TMEI Controller



d. Ergonomics.

Why **CurrentControl** vs. Pneumatic Clutch?

Superior Productivity

- Up to 2–3X faster
- Unrestricted speed control
- Up to 25% less noise
- Cleaner operating environment
- Auto torque sequencing
- Proven production durability

Superior Error Proofing

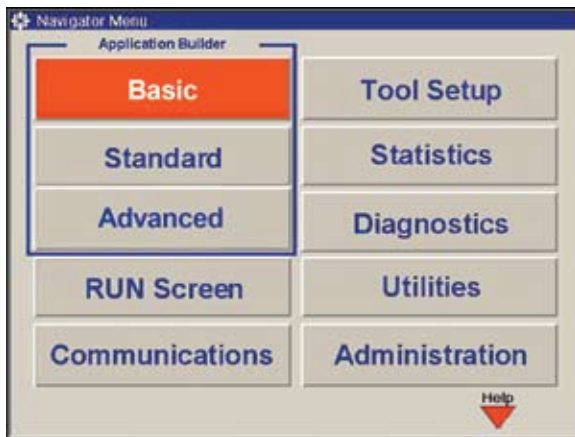
- 96 position fastener count
- 9 tool LED operator feedback
- 8 configurable I/O
- Fieldbus ready
- 5,000 tightening cycle storage
- Advanced system diagnostics
- Barcode application select

Superior Process Flexibility

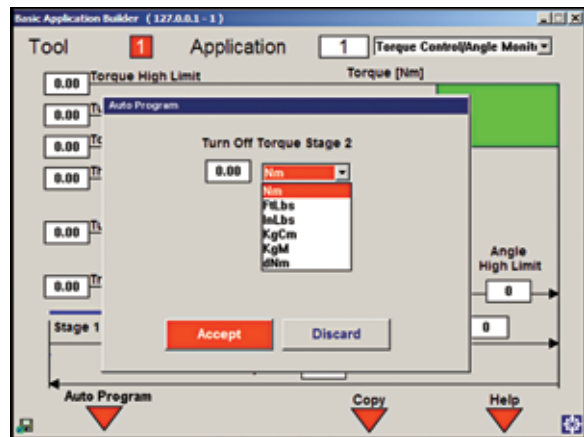
- 255 programmable tightening strategies
- 6 configurable stages per strategy
- Angle process control/monitoring
- Counter clockwise process control/monitoring
- Less parts to maintain – no clutch
- 100M field cable lengths

Easy Setup 1-2-3-Go!

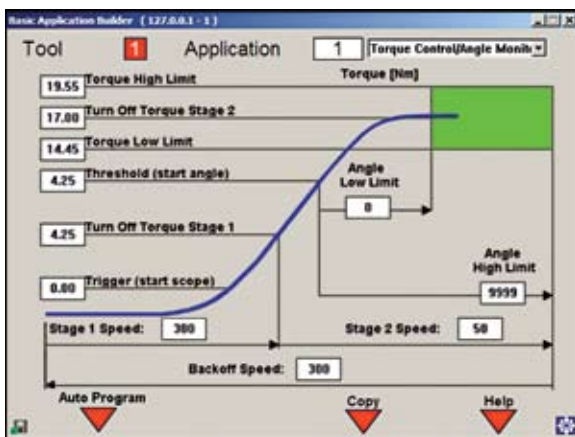
1. Select “Basic” from menu.



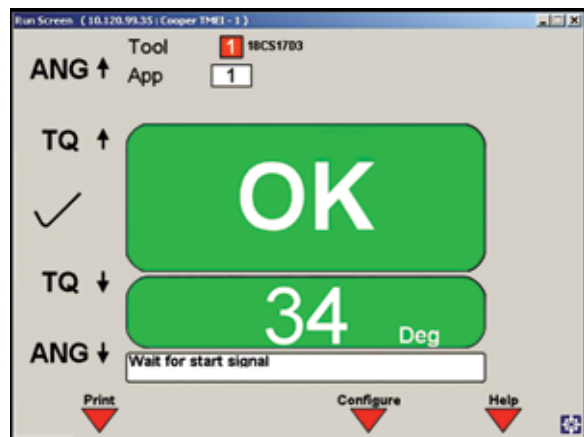
2. Enter final torque value.



3. Tool automatically programmed.



Go! Production ready.



ed. Ergonomics.

Pistol Series

Torque Range
2 - 150 Nm 1.5 - 113 Ft. Lbs.
Bolt Size
M5 - M14 #10 - 5/8"



Angle Series

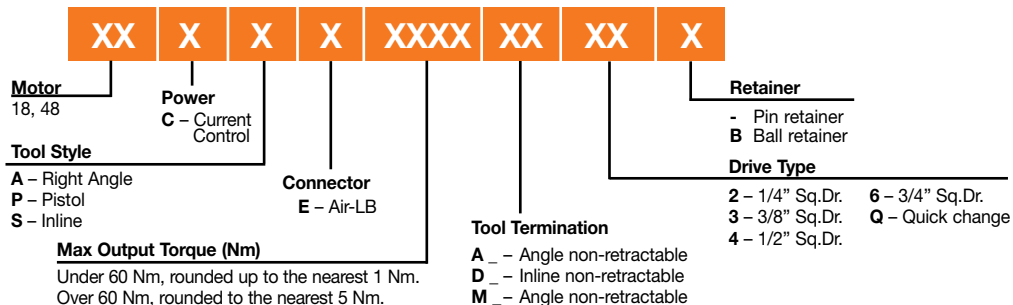
Torque Range
2 - 230 Nm 1.5 - 170 Ft. Lbs.
Bolt Size
M5 - M36 #10 - 1 1/2"

Inline Series

Torque Range
2 - 150 Nm 1.5 - 113 Ft. Lbs.
Bolt Size
M5 - M14 #10 - 5/8"



Standard Tool Nomenclature



Pistol Series Model Number	Torque Range		Max. Speed RPM	Weight*		Output Drive Size	Length		Side to Center	
	ft. lbs.	Nm		lbs.	kg		in.	mm	in.	mm
18CPE06Q	1.5-4.4	2-6	4000	2.2	1.0	1/4" Hex	7.0	178	0.84	21
18CPE06D2	1.5-4.4	2-6	4000	2.2	1.0	1/4"	6.5	165	0.84	21
18CPE12Q	2.2-8.9	3-12	1820	2.4	1.1	1/4" Hex	7.7	196	0.84	21
18CPE12D3	2.2-8.9	3-12	1820	2.4	1.1	3/8"	7.2	183	0.84	21
18CPE17Q	3.0-12.5	4-17	1290	2.4	1.1	1/4" Hex	7.7	196	0.84	21
18CPE17D3	3.0-12.5	4-17	1290	2.4	1.1	3/8"	7.2	183	0.84	21
18CPE22D3	3.7-16.2	5-22	985	2.4	1.1	3/8"	7.2	183	0.84	21
18CPE31D3	5.2-22.9	7-31	695	2.4	1.1	3/8"	7.2	183	0.84	21
48CPE12Q	2.2-8.9	3-12	4000	2.7	1.2	1/4" Hex	8.3	211	0.84	21
48CPE12D2	2.2-8.9	3-12	4000	2.7	1.2	1/4"	7.7	196	0.84	21
48CPE25D3	4.4-18.4	6-25	1820	2.9	1.3	3/8"	8.4	213	0.84	21
48CPE36D3	5.9-26.6	8-36	1290	2.9	1.3	3/8"	8.4	213	0.84	21
48CPE48D3	7.4-35.4	10-48	985	3.0	1.4	3/8"	8.6	218	0.84	21
48CPE65D4	9.6-47.9	13-65	750	5.0	2.3	1/2"	10.8	274	1.1	28
48CPE90D4	14.0-66.4	19-90	510	5.3	2.4	1/2"	11.3	287	1.1	28
48CPE125D4	19.2-92.2	26-125	360	5.3	2.4	1/2"	11.3	287	1.1	28
48CPE150D4	22.9-110.6	31-150	240	5.3	2.4	1/2"	11.3	287	0.9	23

Standard Equipment: Air-LB Connector; Suspension Bail; Dead Handle is included with 18CPE12Q & 18CPE12D3. Reaction bar is included with pistol tools with output torques of 17-150 Nm.

Angle Series Model Number	Torque Range		Max. Speed RPM	Weight*		Output Drive Size	Length		Anglehead					
	ft. lbs.	Nm		lbs.	kg		in.	mm	Side to Center		Height			
									in.	mm	in.	mm	in.	mm
18CAE08AL2	1.5-5.9	2-8	3000	2.9	1.3	1/4"	13.6	345	0.51	13	1.4	36		
18CAE15AM3	3.0-11.1	4-15	1300	3.3	1.5	3/8"	14.8	376	0.59	15	1.6	41		
18CAE22AM3	3.7-16.2	5-22	920	3.3	1.5	3/8"	14.8	376	0.59	15	1.6	41		
18CAE28AM3	4.4-20.7	6-28	700	3.3	1.5	3/8"	14.8	376	0.59	15	1.6	41		
48CAE15AL3	2.2-11.1	3-15	2855	3.8	1.7	3/8"	15.7	398	0.59	15	1.6	41		
48CAE28AL3	4.4-20.7	6-28	1300	4.1	1.9	3/8"	16.2	410	0.59	15	1.6	41		
48CAE41AM3	6.6-30.2	9-41	1090	4.3	2.0	3/8"	17.3	440	0.75	19	1.9	48		
48CAE58AM3	8.9-42.8	12-58	770	4.3	2.0	3/8"	17.3	440	0.75	19	1.9	48		
48CAE58AM4	8.9-42.8	12-58	770	4.3	2.0	1/2"	17.3	440	0.75	19	1.9	48		
48CAE90AH4	13.3-64.2	18-87	515	6.6	3.0	1/2"	18.5	470	0.81	21	2.3	58		
48CAE105AH4	15.5-76.7	21-104	340	6.6	3.0	1/2"	18.5	470	0.81	21	2.3	58		
48CAE135MH4	19.9-98.1	27-133	265	7.3	3.3	1/2"	19.1	485	0.94	24	2.4	61		
48CAE175AX6	26.6-129.8	36-176	190	10.2	4.6	3/4"	21.6	549	1.06	27	2.7	69		
48CAE230AX6	33.9-169.6	46-230	145	10.2	4.6	3/4"	21.6	549	1.06	27	2.7	69		

Standard Equipment: Air-LB Connector; Suspension Bail. Ball retainer optional.

Inline Series Model Number	Torque Range		Max. Speed RPM	Weight*		Output Drive Size	Length		Side to Center	
	ft. lbs.	Nm		lbs.	kg		in.	mm	in.	mm
18CSE06Q	1.5-4.4	2-6	4000	2.5	1.1	1/4" Hex	12.3	312	0.91	23
18CSE06D2	1.5-4.4	2-6	4000	2.5	1.1	1/4"	11.8	300	0.91	23
18CSE12Q	2.2-8.9	3-12	1820	2.7	1.2	1/4" Hex	13.0	330	0.91	23
18CSE12D3	2.2-8.9	3-12	1820	2.7	1.2	3/8"	12.4	315	0.91	23
18CSE17Q	3.0-12.5	4-17	1290	2.7	1.2	1/4" Hex	13.0	330	0.91	23
18CSE17D3	3.0-12.5	4-17	1290	2.7	1.2	3/8"	12.4	315	0.91	23
18CSE22D3	3.7-16.2	5-22	985	2.7	1.2	3/8"	12.4	315	0.91	23
18CSE31D3	5.2-22.9	7-31	695	2.7	1.2	3/8"	12.4	315	0.91	23
48CSE12Q	2.2-8.9	3-12	4000	3.0	1.4	1/4" Hex	13.5	343	0.91	23
48CSE12D2	2.2-8.9	3-12	4000	3.0	1.4	1/4"	13.0	330	0.91	23
48CSE25D3	4.4-18.4	6-25	1820	3.2	1.5	3/8"	13.6	345	0.91	23
48CSE36D3	5.9-26.6	8-36	1290	3.2	1.5	3/8"	13.6	345	0.91	23
48CSE48D3	7.4-35.4	10-48	985	3.3	1.5	3/8"	13.8	351	0.91	23
48CSE65D4	9.6-47.9	13-65	750	5.3	2.4	1/2"	16.6	420	1.13	29
48CSE90D4	14.0-66.4	19-90	510	5.6	2.5	1/2"	17.1	435	1.13	29
48CSE125D4	19.2-92.2	26-125	360	5.6	2.5	1/2"	17.1	435	1.13	29
48CSE150D4	22.9-110.6	31-150	240	5.6	2.5	1/2"	17.1	435	1.13	29

Standard Equipment: Air-LB Connector; Suspension Bail; Dead Handle is included with 18CSE12Q and 18CSE12D3. Reaction bar is included with inline tools with output torques of 17-150 NM.

** Weights are without tool cable or suspension bail. All tools must be used with a approved Cooper Power Tools cable and controller.

Cleco CurrentControl 18 & 48 Series



Controllers

Model Number		Description
115VAC	230VAC	
TMEI-114-15-*	TMEI-114-30-*	1 Channel Controller - Ethernet - IO
TMEI-114-15- *-ED	TMEI-114-30- *-ED	1 Channel Controller - Ethernet - IO - Devicenet
TMEI-114-15- *-EP	TMEI-114-30- *-EP	1 Channel Controller - Ethernet - IO - Profibus

Connectivity: (1) Serial, (1) TM-COM, (1) Ethernet, (8) 24AV Inputs, (8) 24AV Outputs.

*Languages offered: C-Chinese, D-German, U-English.

TM-COM-1M included.

NOTE: 48 series tools require TMEI 230VAC.



Cables

Model Number		Description
Tool	Extension	
301866-1M*	301877-1M	Cable - 1 Meter Length
301866-2M*	301877-2M	Cable - 2 Meter Length
301866-3M	301877-3M	Cable - 3 Meter Length
301866-6M	301877-6M	Cable - 6 Meter Length
301866-8M	301877-8M	Cable - 8 Meter Length
301866-10M	301877-10M	Cable - 10 Meter Length
301866-15M	301877-15M	Cable - 15 Meter Length
301866-50M	301877-50M	Cable - 50 Meter Length



Maximum cable length 100M 115VAC/20M 230VAC.

*Must be used with 301877-3M extension cable.

Software

Part Number	Description
TM-COM-1M-V2.05	Network software TMEI (Included with CurrentControl controller)
TM-COM-V2.05*	Network software TME, TMEM, TMEI (Serial cable included)
TM-COM1-V2.05*	Advanced setup software (Serial cable included)
543448	Notebook computer loaded with TM-COM (Carrying case included)
543449	Desktop computer loaded with TM-COM (Monitor, keyboard and mouse included)
543488	Notebook computer loaded with TM-COM1 (Carrying case included)



*10 user license USB drive.

Services & Support

Even the most durable tools need a support plan to cover maintenance. Cooper Services offers responsive customer support and maintenance services, ensuring your solution operates seamlessly and efficiently.

For more information on our corded DC products, contact us at 1-800-845-5629, or visit us at www.cooperpowertools.com.

Cooper Power Tools

P.O. Box 1410
Lexington, SC 29071-1410
USA
Phone: 800-845-5629
803-359-1200
Fax: 803-359-0822

Cooper Power Tools

4121 North Atlantic Blvd.
Auburn Hills, MI 48326
USA
Phone: (248) 391-3700
Fax: (248) 391-6295

Cooper Power Tools

5925 McLaughlin Road
Mississauga, Ontario
Canada L5R 1B8
Phone: (905) 501-4785
Fax: (905) 501-4786

Cooper Power Tools de México S.A. de C.V.

Libramiento La Joya No. 1
Bodega No. 2
Esq. Politécnico
Barrio San José
Cuautitlán, Edo de México
C.P. 54870

Phone: +52-55-5899-9510
Fax: +52-55-5870-5012

Cooper Tools Industrial Ltda.

Av. Liberdade, 4055
Zona Industrial - Iporanga
18087-170 Sorocaba, SP
Brazil
Tel: +55-15-3238-3929
Fax: +55-15-228-3260

Cooper Power Tools SAS

Zone industrielle - B.P. 28
77831 Ozoir-la-Ferrière Cedex
France
Téléphone: +33-1-6443-2200
Téléfax: +33-1-6440-1717

Cooper Power Tools GmbH & Co. OHG

Postfach 30
D-73461 Westhausen
Germany
Phone: +49 (0) 73 63/ 81-0
Fax: +49 (0) 73 63/ 81-222
E-Mail:
sales-de@coopertools.com

Cooper Tools Hungária Kft.

Berkenyefa sor 7
H-9027 Győr
Hungary
Tel: +36-96-505 300
Fax: +36-96-505 301

Cooper (China) Co., Ltd.

955 Sheng Li Road,
Heqing Pudong, Shanghai
China 201201
Tel: +86-21-28994176
+86-21-28994177
Fax: +86-21-51118446

www.cooperpowertools.com

Cooper Industries, Ltd.

600 Travis, Ste. 5800
Houston, TX 77002-1001
P: 713-209-8400
www.cooperindustries.com

SP-1037EN 0208 7.5M

SPECIFICATIONS SUBJECT TO CHANGE WITHOUT NOTICE. © 2008 COOPER INDUSTRIES, INC. PRINTED IN USA.

